

Price

TBD (please contact at info@ouiinc.jp)

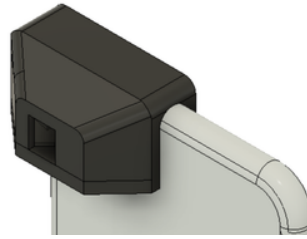
Smart Eye Camera (SEC)

Ophthalmoscope Model

Medical Device Registration Number in Japan: 13B2X10198030401

Size: 20mm × 30mm × 15mm, Weight: 14g

Smartphone Compatibility: iPhone07/08/SE2/SE3



Smartphone Attachment Medical Device to Observe the Posterior Segment of the Eye

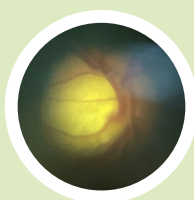
By attaching the ophthalmoscope model to the smartphone, it is possible to observe the posterior segment in a hassle-free manner! Since it uses the camera and light source of the smartphone, there is no need for any extra batteries or flashlight. It is also portable due to its light weight and small size. You can carry it anywhere in the pocket of white coat!

Fundus Part Is Observable WITHOUT Mydriasis

The optic disc and posterior pole are observable without mydriasis. The device is ideal for glaucoma screening in the outreach field due to its ability to observe glaucoma symptoms, such as an enlarged optic disc depression.

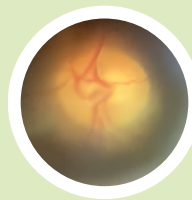
SEC
Smart Eye Camera

Image Captured by the SEC Ophthalmoscope

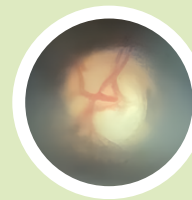


Normal Fundus (Non-Mydratric)

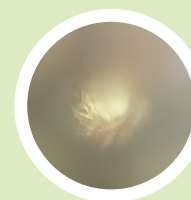
Examples of Diagnosable Cases



Normal Fundus (Mydratric)



Optic Disc Depression (Non-Mydratric)



Chorioretinal Atrophy (Non-Mydratric)